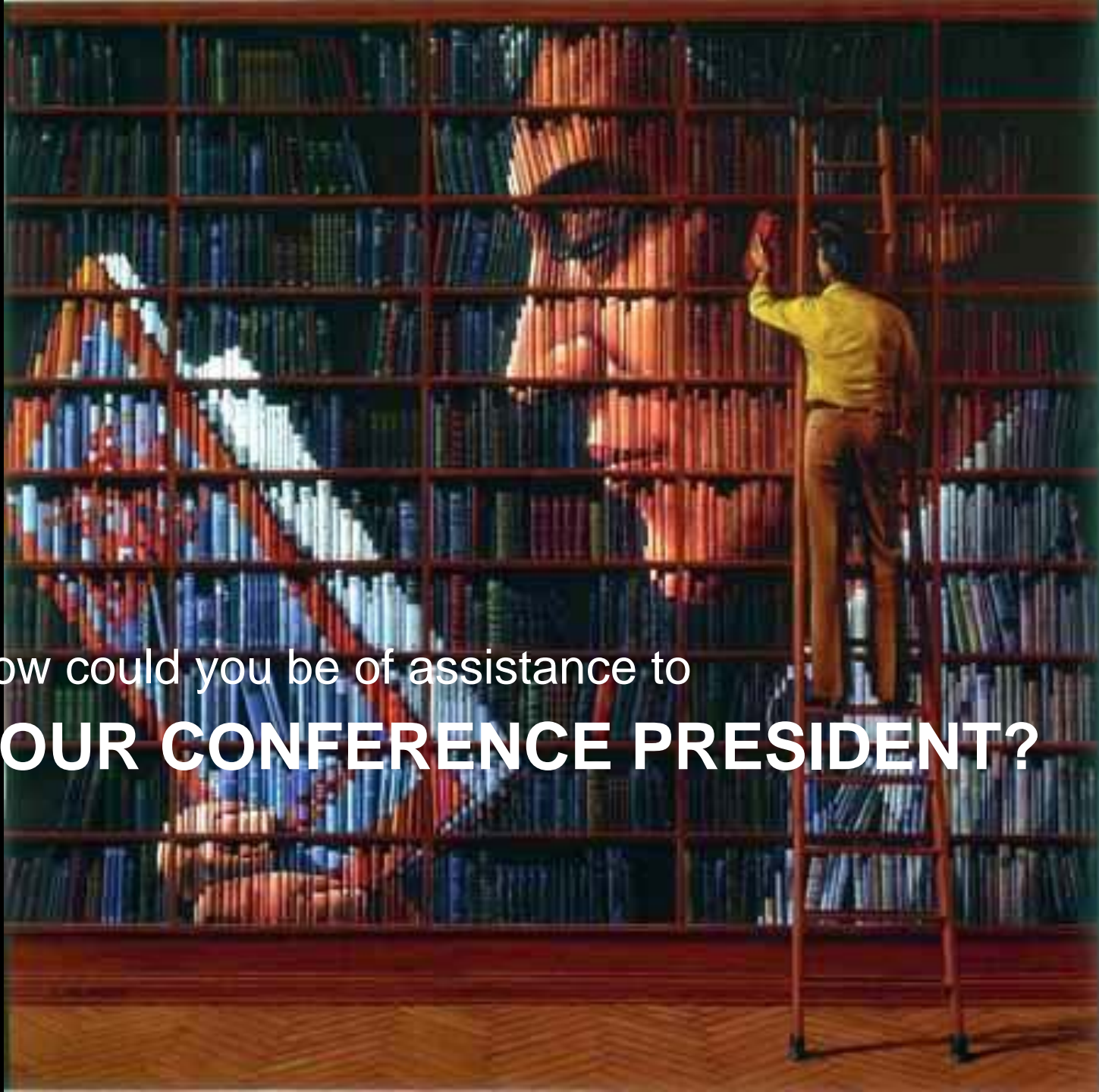




The Relationship Between President and Treasurer

Questions

- What is the uniqueness of the relationship among administrative officers?
- What is the role of the Financial Officer?
- How could you be of help?



How could you be of assistance to
YOUR CONFERENCE PRESIDENT?

Thoughts from Max DePree on “Leadership Is an Art”

COVENANTAL VS CONTRACTUAL

Broadly speaking, there are two types of relationships in industry. The first and most easily understood is the contractual relationship. The contractual relationship covers the quid pro quo of working together. A contractual relationship rests on shallow trust, because contracts are a small part of relationships. The complete relationship needs a covenant.

A contract requires intimacy. Intimacy is the experience of ownership. Beliefs (values) are connected to closeness. Beliefs (values) come before policies or standards or practices. These can never engender competence or confidence.

Managers who have no beliefs (values), but only understand methodology and quantification, are modern-day eunuchs. They can never engender competence or confidence.

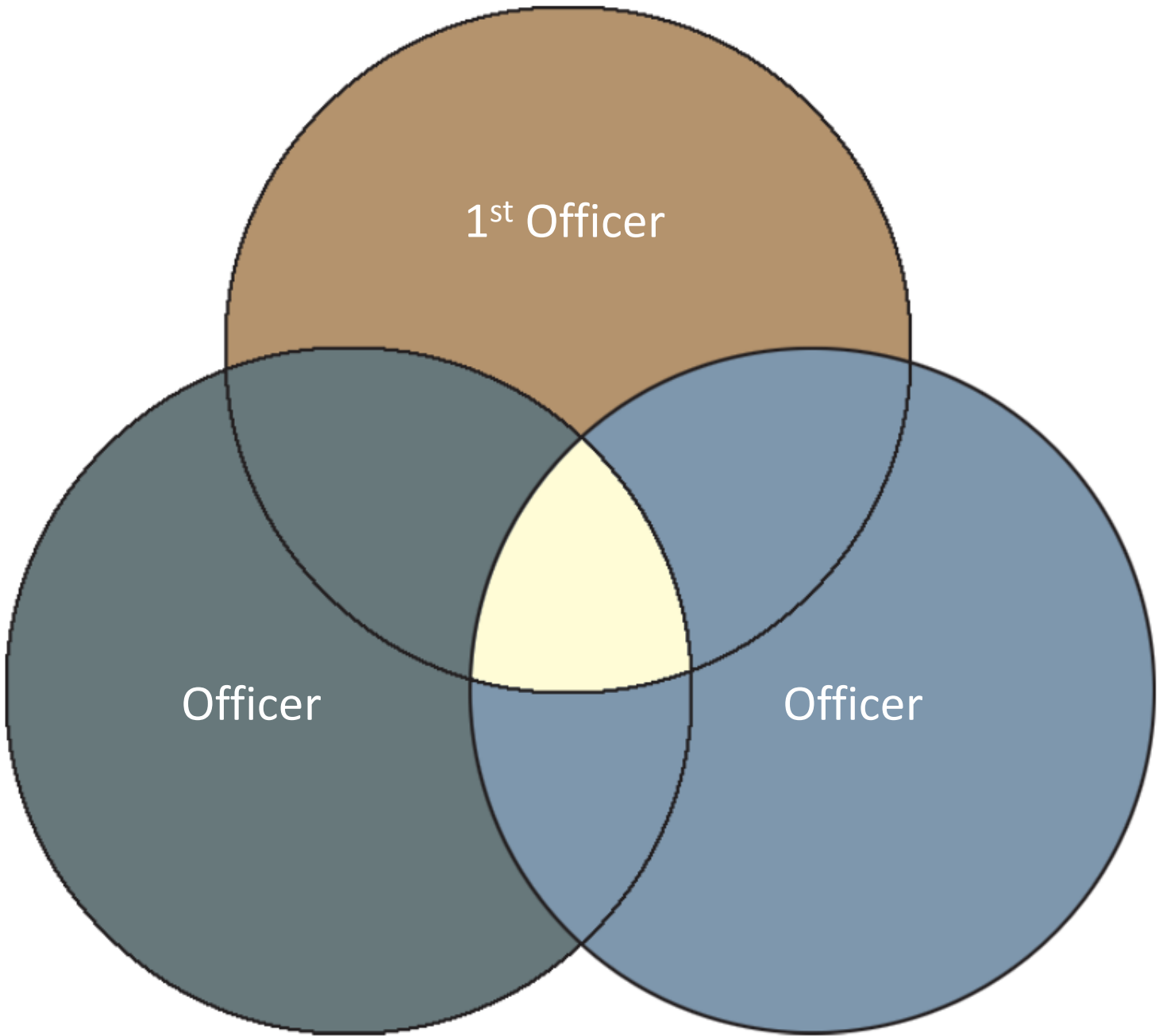
A Contractual Relationship Affects Negatively Your

- Relationship among executive officers
- Spiritual development
- Conflict resolution
- Planning and implementing change
- Management and allocation of resources
- Understanding financial statements
- Denominational policies and regulations
- Ethical decision-making
- Use of Authority and Power
- Efforts to be accountable and transparent
- Mentoring and coaching
- Technology and Its Application

The Constitution and By-Laws describes a consultative model, with a first officer who shall preside at the sessions, chair the executive committee , and serve in the general interest of the organization.

The Constitution and By-Laws
also designates two other
officers with assigned areas of
responsibility.

The three officers fulfill their duties in close consultation and cooperation with each other.



The Treasurer serves, together with the president, under the direction of the executive committee, shall report to the executive committee after consultation with the president.

A Treasurer is

- A financial leader
- A business manager
- A stewardship promoter
- A spiritual leader
- A presidential advisor

Learn how to be leaders



The End